

SPECIFICATIONS

Rated(额定参数): 300V,12A
 Dielectric strength(抗电强度): AC2000V/1 Minute
 Insulation Resistance(绝缘电阻):1000MΩ Min
 Contact Resistance(接触电阻):20mΩ Max
 Screw Torque(扭矩): 0.5Nm (4.4Lb.in)
 Wire Range(线径):1.4~2.2AWG
 Strip length(剥线长度):4.5~5mm
 Temp. range(操作温度): -40℃~+105℃
 MAX Soldering(瞬时温度):+250℃,5s

Housing Material(塑件): PA66 (UL94 V-0)
 Contact(端子): Brass, Tin plating(黄铜镀锡)
 Wire protector(弹片): Bronze(磷铜), Ni plating(镀镍)
 Screw (螺丝): M3.0, Steel, Zinc plating(钢 镀锌)

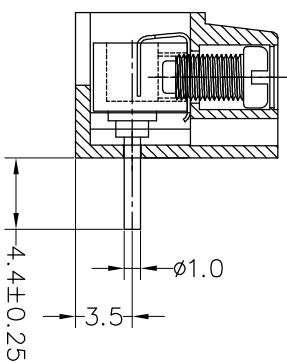
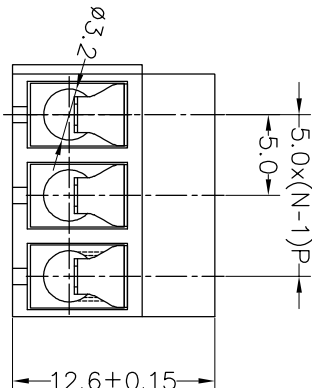
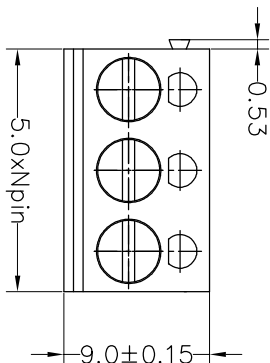
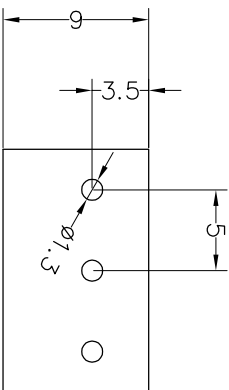
PITCH RANGE		NOMINAL DIMENSION RANGE		IN MM		OVER		OVER		OVER	
IN	MM	IN	MM	IN	MM	IN	MM	IN	MM	IN	MM
TO	6	OVER	10	OVER	30	OVER	60	OVER	100	OVER	150
6	TO	TO	24	TO	50	TO	100	TO	150	TO	150
±0.10	±0.15	±0.25	±0.30	±0.30	±0.50	±0.50	±0.70	±1.00			

Ordering Information

JL 300R - 500 XX U X 1

Pitch 500=5.0PH
 No.of pins 2P,3P,4P~24P
 Housing Color
 B=Black
 G=Green
 U=Blue
 R=Red
 W=White
 Y=Yellow
 O=Orange
 E=Grey
 Packing
 0=Pe bog
 T=Tube
 A=Troy

Recommended P.C.B Layout(Top Side)



REV	DATE	MODIFICATION DESCRIPTION	CHANGE	OPERATION		DRAW	BEN	17.01.04	SCALE	FIT	PART NO.	TITLE:
				Angle	±3'							
A0	2017.01.04	NEW DRAWING		X:XXX	±0.10	CHECK				1/1	JL300R-500XXUX1	90° Dip
1			CHANGE									

JIN 深圳市锦凌电子有限公司
 SHENZHEN JINLING ELECTRONIC CO.,LTD
 Tel: 86-755-2997-5806/5802 Fax: 86-755-2997-5992